

---

# DINING & EVENTS



---

# THE IDEAL VENUE

---

WE HAVE A NUMBER OF FUNCTION ROOMS INCORPORATING THE CHARM OF A TRADITIONAL WILTSHIRE BARN, BENEFITING FROM NATURAL LIGHT AND FEATURE WINDOWS TO ACCOMMODATE SMALL OR LARGE GROUPS OF UP TO 200. ALL OUR FOOD IS HOMEMADE ON THE PREMISES AND WE SOURCE OUR PRODUCE LOCALLY WHERE POSSIBLE. WE CAN TAILOR MENUS TO SUIT. WE ALSO HAVE AMPLE FREE CAR PARKING

---

WE CATER FOR THE FOLLOWING:

**Annual Calendar Events:** see website for details

Valentines Day • Mothers Day • Easter Lunch • Fathers Day • Christmas Lunches  
Boxing Day Lunch • New Years Eve

**Occasions:** rooms are available to hire for your event

Birthdays • Anniversaries • Engagements • Christenings • Children's Parties • School Proms  
Funeral Wakes • Dinner Dances / Balls • Private Dinners

**Sunday Lunches:** two or three courses

You will be treated with views over our wonderful Golf course which is set over 400 acres of beautiful parkland and woodland. We can accommodate small or large parties. Children are also welcome. Prebooking advised

**Afternoon Tea:**

Where better to indulge in a traditional afternoon tea than at Cumberwell Park. You will be treated with views over our wonderful Golf course which is set over 400 acres of beautiful parkland and woodland. Afternoon Tea at Cumberwell Park is a great place whether it's for a special occasion or just a treat for yourselves.

Prebooking Requires

---

**OUR EXPERIENCE MEANS WE CAN RECOMMEND A WEALTH OF SUPPLIERS, SUCH AS**

Entertainment • Decorations • Cakes • Soft Play • Photographer • Florist  
Complimentary place cards are also provided

# WRAXALL

The Wraxall Room is on the ground floor and is a lovely light contemporary space, constructed with a traditional oak frame and beautiful limestone floor. From here there are views over the golf course and also far reaching views of the surrounding Wiltshire countryside. The Wraxall Room is suitable for up to 80 guests for a seated banquet or 150 guests for a standing reception. there is plenty of space to accommodate a band or disco and it also comes with its own P.A and audio system. There is also an adjacent bar.



During the day the Wraxall bar & brasserie is open for breakfast & lunch, tea, coffees, cake and a fully stocked bar.

*Wraxall*  
Bar & Brasserie

---

# HAYSWOOD

---

Our main function room benefiting from stunning panoramic views of the Wiltshire countryside and access to a balcony with seating. This room has all of the characteristics and charm of a traditional tithe barn including a feature stone fireplace and a vaulted wooden ceiling with beams. There is a Bar in the room with a full P.A system, projector and screen facilities. Suitable for up to 160 guests for a seated banquet or up to 230 guests with the adjoining Rushmead Room for a standing reception



# RUSHMEAD

Benefiting from stunning views over the Wiltshire countryside, our Rushmead room also has all of the characteristics and charm of a traditional tithe barn including a vaulted wooden ceiling with beams. There is a bar in the room with a full P.A system, projector and screen facilities. Suitable for up to 60 guests for a seated banquet or up to 90 guests for a standing reception, This room is ideal for a band or disco with our dance floor when hired in conjunction with the Hayswood Suite.



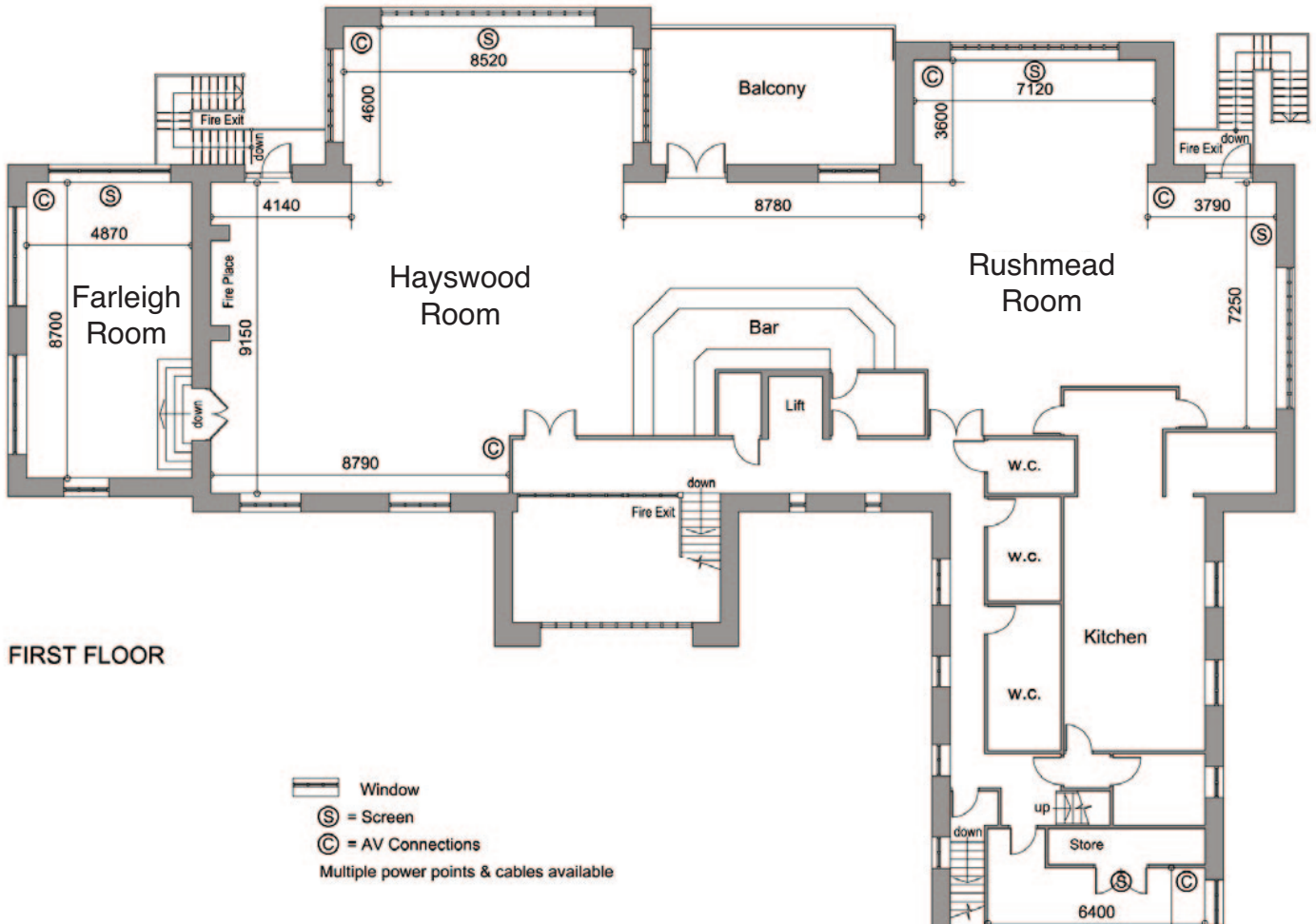
---

# FARLEIGH

---

A smaller room adjacent to our Hayswood function room benefitting from stunning panoramic views of the Wiltshire countryside. There is a projector and screen facility. Suitable for up to 25 guests for a seated banquet or more with the adjoining room. Cosy room for more intimate events.







---

**GOLF  
WEDDINGS  
DINING & EVENTS  
CONFERENCES & MEETINGS**

Cumberwell Park  
Bradford - on - Avon  
Wiltshire  
BA15 2PQ

Tel: 01225 863322  
[www.cumberwellpark.com](http://www.cumberwellpark.com)